

# Operating and Installation Instructions

Avigilon High Definition IP Dome Camera Indoor/Outdoor Pendant Mount DOME-OD-PEND

---

Avigilon Corporation  
Vancouver, BC  
Canada

TEL 604.629.5182  
FAX 604.629.5183

[avigilon.com](http://avigilon.com)



# Installation

## Installation Steps

Follow these steps to install the indoor/outdoor pendant mount. Details on how to complete each of these steps are in the following sections.

1. Check the package contents against the list below.
2. Mount the indoor/outdoor pendant mount.
3. Mount the dome camera.

### Package Contents

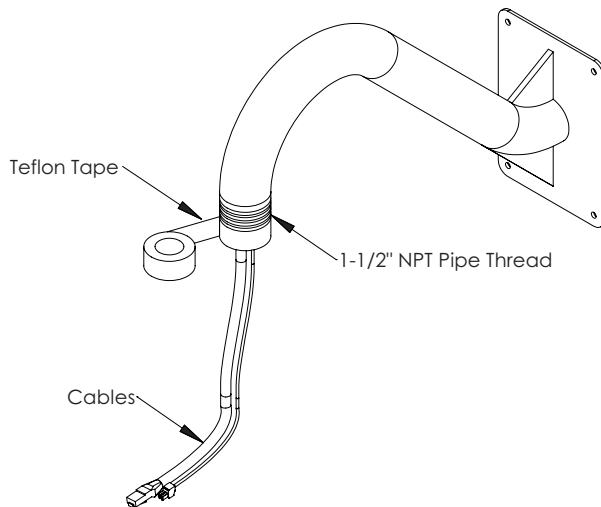
The package contains the following:

- Avigilon High Definition IP Dome Camera Indoor/Outdoor Pendant Mount
- 3 x Screw for Mounting Dome
- Teflon Sealing Tape

## Mounting the Indoor/Outdoor Pendant Mount

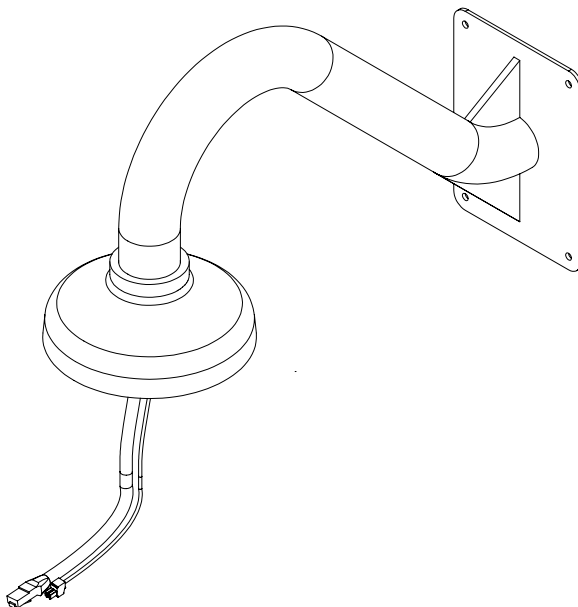
To mount the indoor/outdoor pendant mount, complete the following steps:

1. When installing outdoors, wrap the supplied Teflon tape around the 1-1/2" NPT male thread of a wall/ceiling mount bracket (not included) to create a water tight seal.



**Figure:** Wall/ceiling mount bracket (not included)

2. Screw the pendant mount onto the wall/ceiling mount bracket until tight.



**Figure:** Indoor/Outdoor Pendant Mount



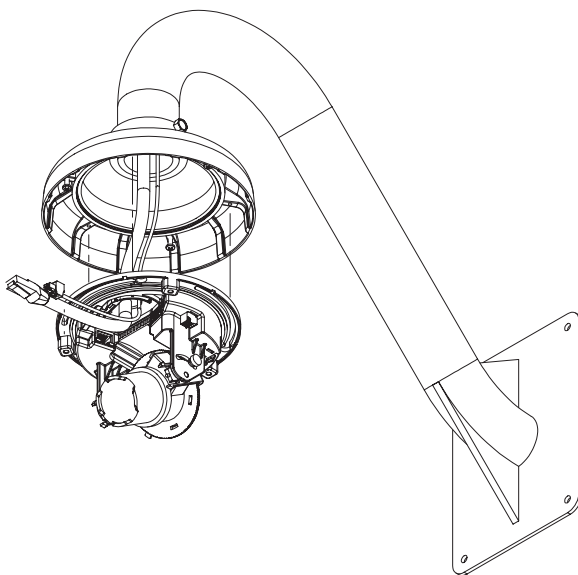
**Caution**

- If the Avigilon dome camera is not mounted according to the instructions, there may be problems with moisture which is not covered by warranty.
-

## Mounting the Dome Camera

To mount the dome camera, complete the following steps:

1. Drive the three supplied screws into the holes on the pendant mount and leave 6 mm (1/4") between the screw head and the surface.
2. Pull the cables through the cable entry hole in the pendant mount and the cable entry hole in the dome camera.
3. Place the dome base on the screws using the keyed mounting slots and rotate it clockwise.
4. Tighten the screws to hold the dome camera in place and to create a water tight seal between the dome and the pendant mount.
5. Finish the installation of the dome camera according to the dome camera installation instructions.



**Figure:** Dome Camera Installation

# Limited Warranty & Technical Support

Avigilon warrants to the original consumer purchaser, that this product will be free of defects in material and workmanship for a period of 3 years from date of purchase. The manufacturer's liability hereunder is limited to replacement of the product, repair of the product or replacement of the product with repaired product at the discretion of the manufacturer. This warranty is void if the product has been damaged by accident, unreasonable use, neglect, tampering or other causes not arising from defects in material or workmanship. This warranty extends to the original consumer purchaser of the product only.

AVIGILON DISCLAIMS ALL OTHER WARRANTIES EXPRESSED OR IMPLIED INCLUDING, WITHOUT LIMITATION, ANY IMPLIED WARRANTIES OF MERCHANTABILITY OR FITNESS FOR A PARTICULAR PURPOSE, EXCEPT TO THE EXTENT THAT ANY WARRANTIES IMPLIED BY LAW CANNOT BE VALIDLY WAIVED.

No oral or written information, advice or representation provided by Avigilon, its distributors, dealers, agents or employees shall create another warranty or modify this warranty. This warranty states Avigilon's entire liability and your exclusive remedy against Avigilon for any failure of this product to operate properly.

In no event shall Avigilon be liable for any indirect, incidental, special, consequential, exemplary, or punitive damages whatsoever (including but not limited to, damages for loss of profits or confidential or other information, for business interruption, for personal injury, for loss of privacy, for failure to meet any duty including of good faith or of reasonable care, for negligence, and for any other pecuniary or other loss whatsoever) arising from the use of or inability to use the product, even if advised of the possibility of such damages. Since some jurisdictions do not allow the above limitation of liability, such limitation may not apply to you.

This Limited Warranty gives you specific legal rights and you may also have other rights which vary from jurisdiction to jurisdiction.

**Warranty service and technical support can be obtained by contacting Avigilon Technical Support by phone at 1.888.281.5182 or via email at [support@avigilon.com](mailto:support@avigilon.com).**

This page is intentionally left blank.

**avigilon**  
THE BEST EVIDENCE™

©2009 Avigilon Corporation  
V1.1