

Avigilon Control Center System Integration Guide

with STENTOFON AlphaCom



Copyright © 2013 Avigilon. All rights reserved.

No copying, distribution, publication, modification, or incorporation of this document, in whole or part, is permitted without the express written permission of Avigilon. In the event of any permitted copying, distribution, publication, modification, or incorporation of this document, no changes in or deletion of author attribution, trademark legend, or copyright notice shall be made. No part of this document may be reproduced, stored in a retrieval system, published, used for commercial exploitation, or transmitted, in any form by any means, electronic, mechanical, photocopying, recording, or otherwise, without the express written permission of Avigilon.

STENTOFON and the STENTOFON monogram are registered trademarks of Zenitel Norway AS.

AlphaCom is a registered trademark of Zenitel Norway AS.

Avigilon has made every effort to identify trademarked properties and owners on this page. All brands and product names used in this document are for identification purposes only and may be trademarks or registered trademarks of their respective companies.

Avigilon
Tel +1.604.629.5182
Fax +1.604.629.5183

<http://www.avigilon.com>

Revised 2013-2-28

Table of Contents

Introduction	1
Requirements	1
For More Information	1
Installation	2
Server	2
Client	2
Checking the License	2
Configuration	3
Communicating with the AlphaCom XE Exchange	3
Adding an Integration User in Avigilon	3
OnCustomParameter Events in AlphaCom XE Exchange	3
Avigilon Alarm Configuration	3
Avigilon Stentofon Gateway	5
Connecting to the Gateway	5
Mapping Alarms	6
Backing Up Mapped Alarms	7
Restoring Mapped alarms	7
Monitoring Alarms	9

Introduction

The STENTOFON AlphaCom and Avigilon Control Center software integration allows for the AlphaCom Critical Communication Over IP (CCoIP) system to be integrated with the Avigilon High Definition Surveillance System. Whenever an AlphaCom help point is activated, the Avigilon Control Center enables you to monitor and record the event remotely.

Requirements

Vendor	Requirements
Avigilon	Control Center Server Software 4.0.2.4 or later
Avigilon	Avigilon Third Party Integration License: ACC-STENTOFON-NVR
Avigilon	Avigilon STENTOFON Gateway software integration: StentofonGateway.exe The file can be downloaded at http://avigilon.com/#/support-and-downloads/software/integration-and-plug-in-downloads/
STENTOFON	AlphaCom XE System
STENTOFON	STENTOFON API: 100964990(x)

For More Information

For more detailed information about the procedures outlined in this guide, refer to the specific software documentation.

- *Avigilon Control Center Client User Guide*
- *Avigilon Control Center Server User Guide*
- *STENTOFON SDK API: Quick Start Guide*

Installation

Server

Install the following on any server that has access to an AlphaCom server through your network.

1. The Avigilon Control Center Server software.
2. The Avigilon Stentofon Gateway software integration

Client

Install the following as needed:

- Install the Avigilon Control Center Client software on the computers that require access to the Avigilon Control Center System

Checking the License

After you have installed all the required software, you can check if the `ACC-STENTOFON-NVR` licence has been properly applied:

1. Open the Avigilon Control Center Admin Tool.
2. Select the **Settings** tab and click **Licensing**. The License Activation dialog box appears.

The dialog box must say *Integration Connections: Yes* or the software was not properly licensed.

Configuration

The Avigilon Stentofon Gateway software is used to direct alarm communication between the STENTOFON AlphaCom system and the Avigilon Control Center software. Configure the two applications for their connection to the Avigilon Stentofon Gateway software.

Communicating with the AlphaCom XE Exchange

The AlphaCom firewall must be configured to allow the AlphaCom XE exchange to communicate with the Avigilon Stentofon Gateway software.

1. Log in to AlphaWeb.
2. Select **System Configuration > Filters**.
3. Select the two check boxes beside **OPC Server** with port **61112**.

See the section about communicating with the AlphaCom XE exchange in the *STENTOFON SDK API: Quick Start Guide* for more information.

Adding an Integration User in Avigilon

To protect the security of the Avigilon Control Center Server, add a user to the Avigilon software specifically for connecting to the integration. See the *Avigilon Control Center Client User Guide* for details about how to add users.

This user must have the following permissions to enable all the integration features:

- View Live Images

The Avigilon Stentofon integration user name and password is required to add Avigilon Servers to the Avigilon Stentofon Gateway configuration application.

OnCustomParameter Events in AlphaCom XE Exchange

The Avigilon Stentofon Gateway software maps AlphaCom XE exchange OnCustomParameter events to alarms in the Avigilon Control Center Client.

To create OnCustomParameter events in the AlphaCom XE exchange, see the section about OnCustomParameter events in the *STENTOFON SDK API: Quick Start Guide*.

Avigilon Alarm Configuration

Alarms are manually created in the Avigilon Control Center Client software. Create the Avigilon alarms you want mapped to the OnCustomParameter events in the AlphaCom software, then assign the required cameras and settings for the alarm.

1. In the Avigilon Control Center Client software, select **Tools > Setup** then select the Avigilon Server to define the alarm on.
2. On the server Setup dialog box, click **Alarms**.
3. On the Add Alarm dialog box, click **Add**.
4. On the Select Alarm Trigger Source page, select **External Software Event** from the **Alarm Trigger Source** drop down list and click **Next**.
5. On the Select Linked Cameras page, select the cameras to link to this alarm, and set the **Pre-Alarm Record Time** and the **Recording Duration**. Click **Next**.
6. Select the groups or users who should receive alarm notifications, then click **Next**.
7. (Optional) If you would like to trigger an action when an alarm is acknowledged, select the **Activate selected digital output(s) on alarm acknowledgement** check box.
 - a. Select the digital outputs to be activated and specify the duration.
 - b. Select the **Require user confirmation before activating digital output** check box if users need to confirm the alarm before the digital output action is initiated.
 - c. Click **Next**.
8. Enter a **Name** for the alarm and set the alarm **Priority**. The alarm name is used to identify the alarm during the integration.
9. Ensure the **Enable Alarm** check box is selected and click **Finish**.

Avigilon Stentofon Gateway

The Avigilon Stentofon Gateway is composed of two parts: the Avigilon Stentofon Gateway Windows service that runs automatically in the background, and the Avigilon Stentofon Gateway configuration application that is used to configure the connection and alarm mappings between the STENTOFON and the Avigilon systems.

NOTE: Whenever the Avigilon Stentofon Gateway configuration application is opened, the Avigilon Stentofon Gateway service is stopped.

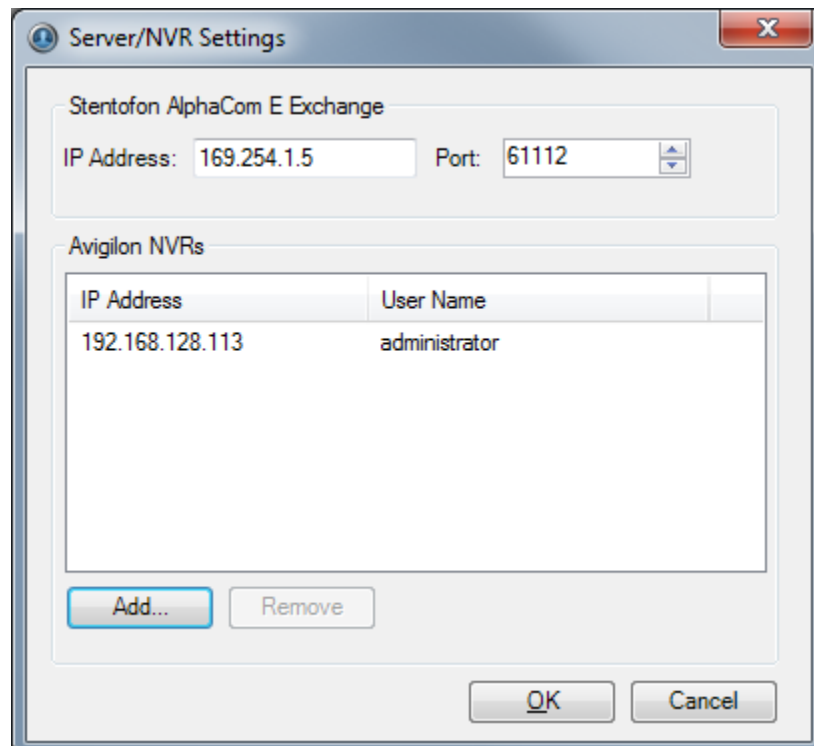
If a mapped alarm is activated while the configuration application is open, the alarm will only appear in the application that detected the alarm.

Connecting to the Gateway

Configure the Avigilon Stentofon Gateway to access the two applications.

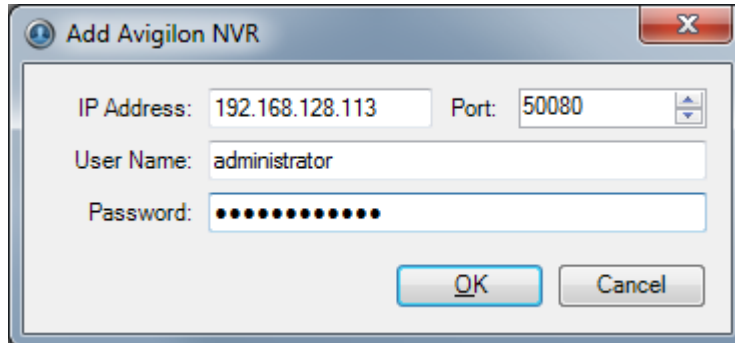
The Avigilon Stentofon Gateway configuration application remembers the server configuration, so you do not need to repeat this procedure if the settings remain the same.

1. Open the Avigilon Stentofon Gateway software. **Start > All Programs > Avigilon > Stentofon Gateway > Configure Avigilon Stentofon Gateway.**
2. In the Gateway dialog box, enter the AlphaCom XE Exchange IP address and port number.



3. Click **Add** to add the Avigilon Server.

4. In the dialog box, enter the Avigilon Server **IP Address**, **User Name** and **Password**, then click **OK**.

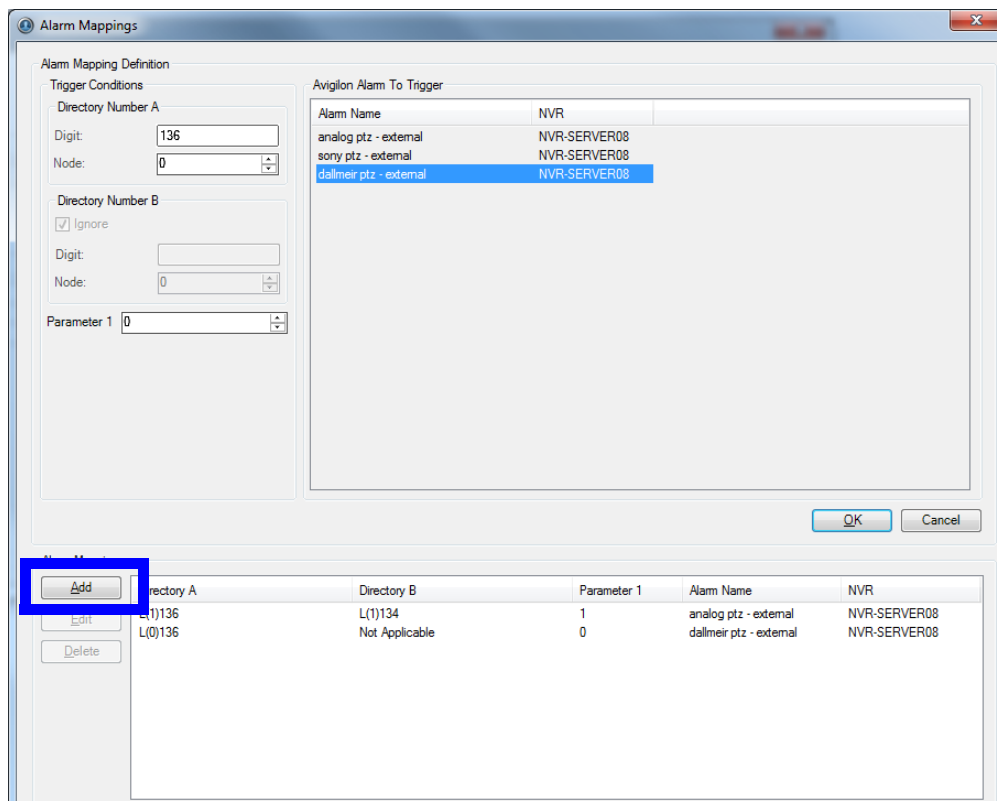


Use the username and password created in the Avigilon configuration. See *Adding an Integration User in Avigilon* on page 3.

5. If you have more than one Avigilon Server in your surveillance system, repeat steps 3-4 until all the servers have been added.
6. Click **OK**.

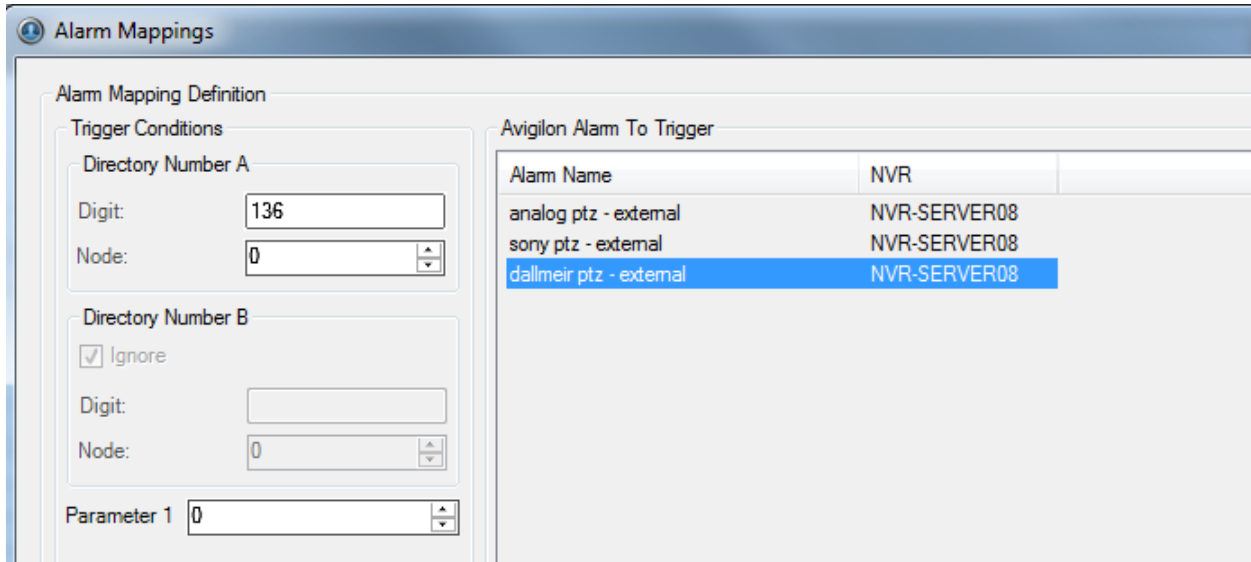
Mapping Alarms

1. Open the Avigilon Stentofon Gateway configuration application.
2. Confirm that the server configurations are correct then click **OK**.
3. In the Alarm Mappings dialog box, click **Add**.



- In the Alarm Mapping definition area, enter the trigger conditions that were configured in the AlphaCom XE exchange.

Digit refers to the string used to identify the OnCustomParameter event, and **Node** refers to the AlphaCom XE exchange this OnCustomParameter event is linked to. The **Parameter** drop down list allows you to select the specific instance of the custom parameter to map to.



- Select the Avigilon Alarm the trigger will map to. All the alarms configured in Avigilon are listed.

See *Avigilon Alarm Configuration* on page 3 for more information.

- Click **Ok**.

The mapped alarms will now appear in the Alarm Mappings area.

- Repeat step 3-6 until all the alarms you require are mapped.
- Click **Save**.

Backing Up Mapped Alarms

After you finish mapping all the alarms in the Avigilon Stentofon Gateway, you can choose to back up a copy of the mappings.

- Navigate to `C:\Program Files\Avigilon\Avigilon Stentofon Gateway\`.

NOTE: The filepath may be different depending on how your system is configured.

- Copy and paste the `GatewayParams.xml` file to a back up location.

Restoring Mapped alarms

When you have a backup copy of the mapped alarms, you can restore the integration to use the back up copy any time.

1. Open the Avigilon Stentofon Gateway configuration application to stop the Gateway Windows service.
2. Locate your backup copy of the `GatewayParams.xml` file.
3. Copy and paste the backup `GatewayParams.xml` file into the `C:\Program Files\Avigilon\Avigilon Stentofon Gateway` folder.
Allow Windows to overwrite the copy that is currently in the folder.
4. Close the Avigilon Stentofon Gateway configuration application to start the Gateway Windows service.
5. To check if the mapped alarms were restored correctly, open the Avigilon Stentofon Gateway configuration application again.

Monitoring Alarms

Once mapped, events triggered in AlphaCom will trigger alarms in the Avigilon Control Center.

To monitor alarm video in the Avigilon Control Center software, see the alarm monitoring section of the *Avigilon Control Center Client User Guide*.